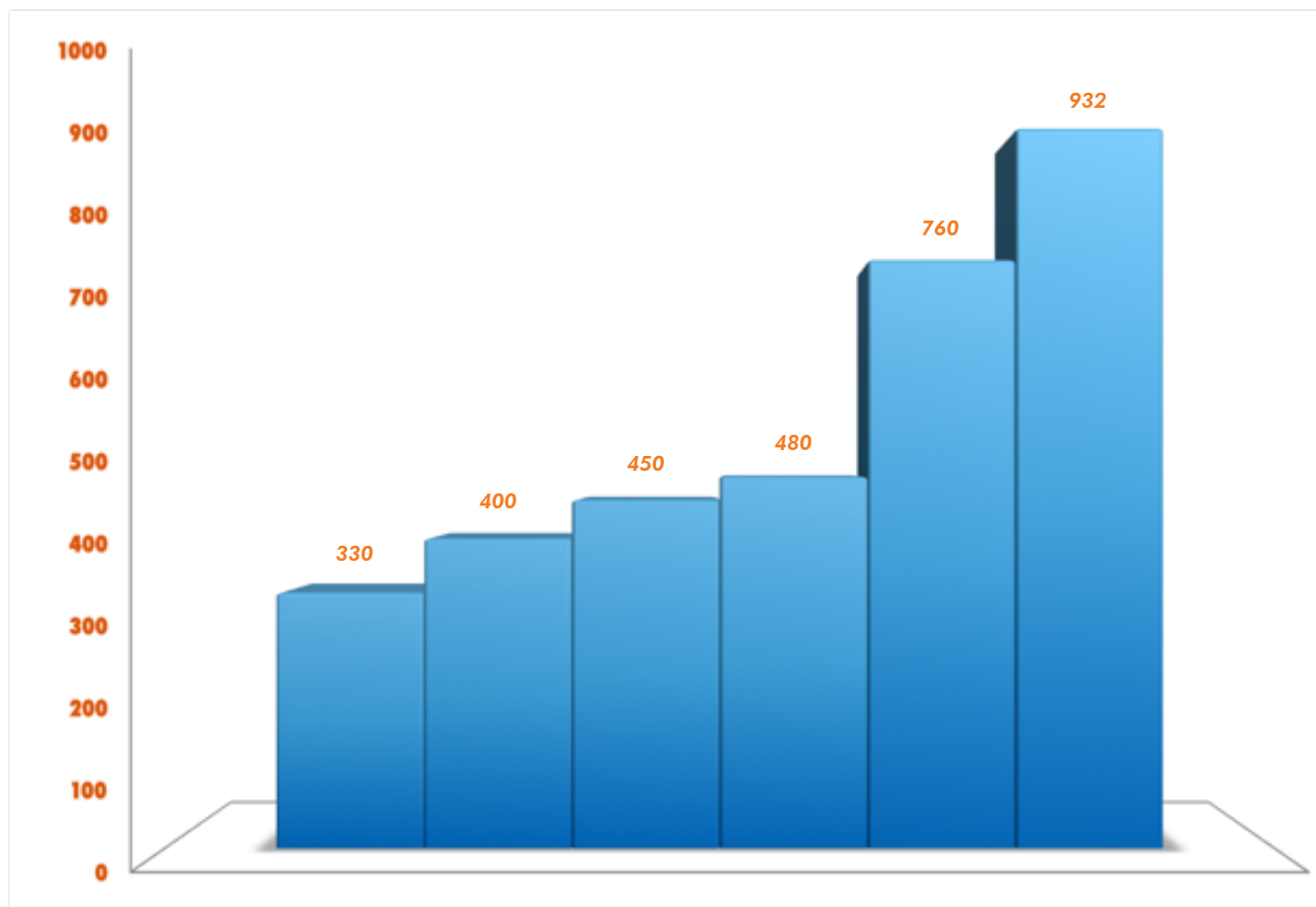
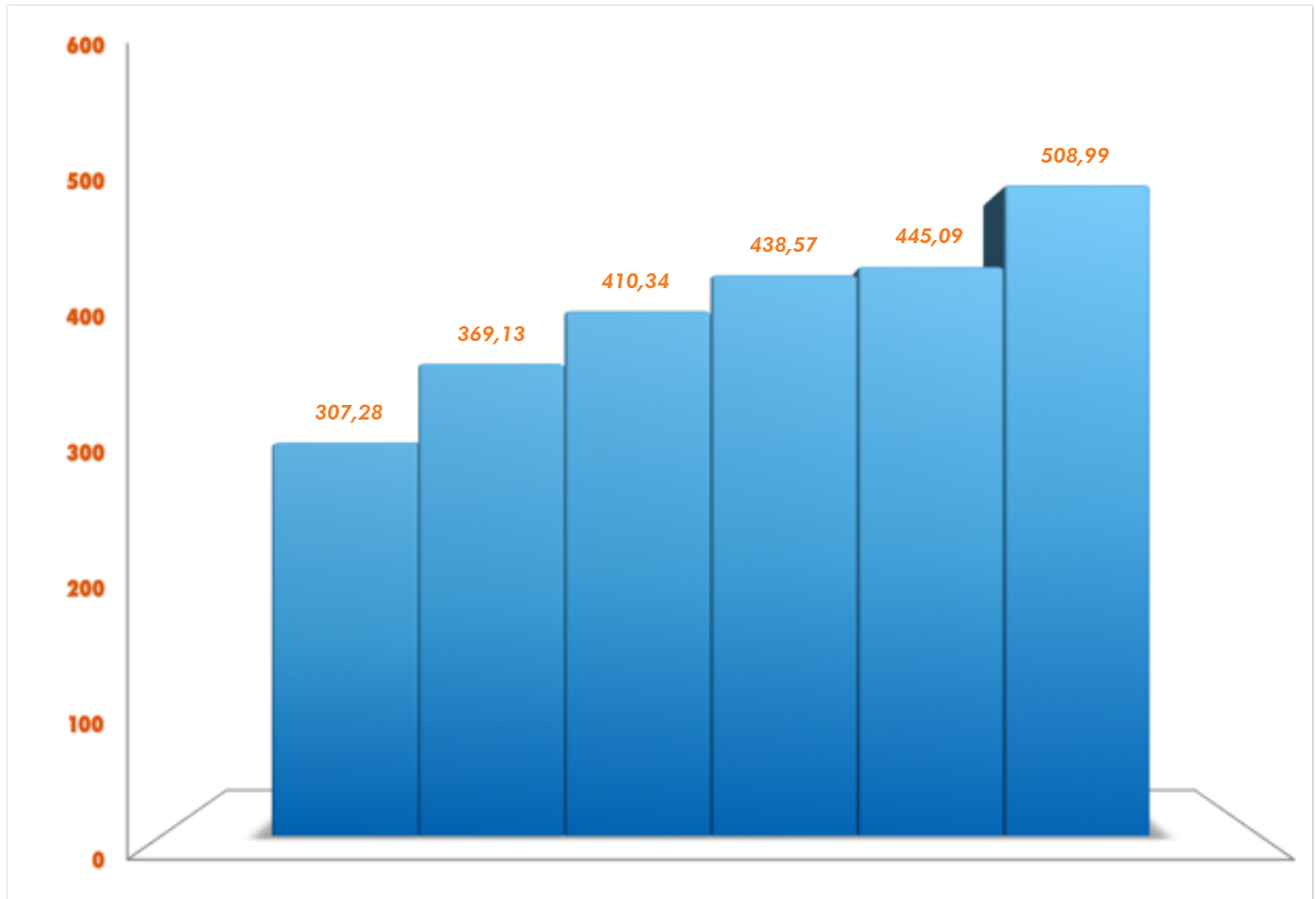


REPASSES - R\$ MILHÕES



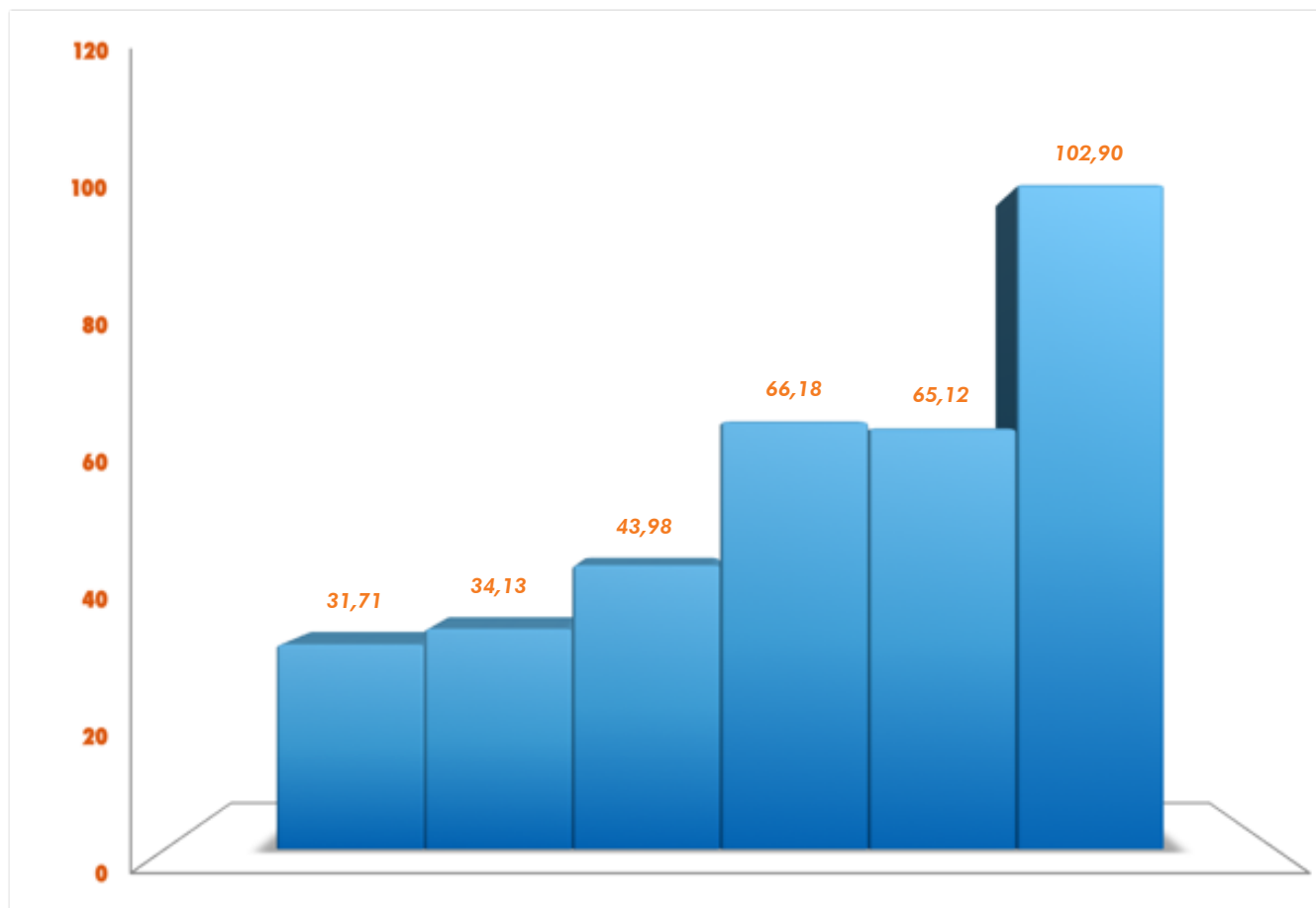
	2009	2010	2011	2012	2013	2014
Repasso	330	400	450	480	760	932

MINISTÉRIO DO ESPORTE - R\$ MILHÕES



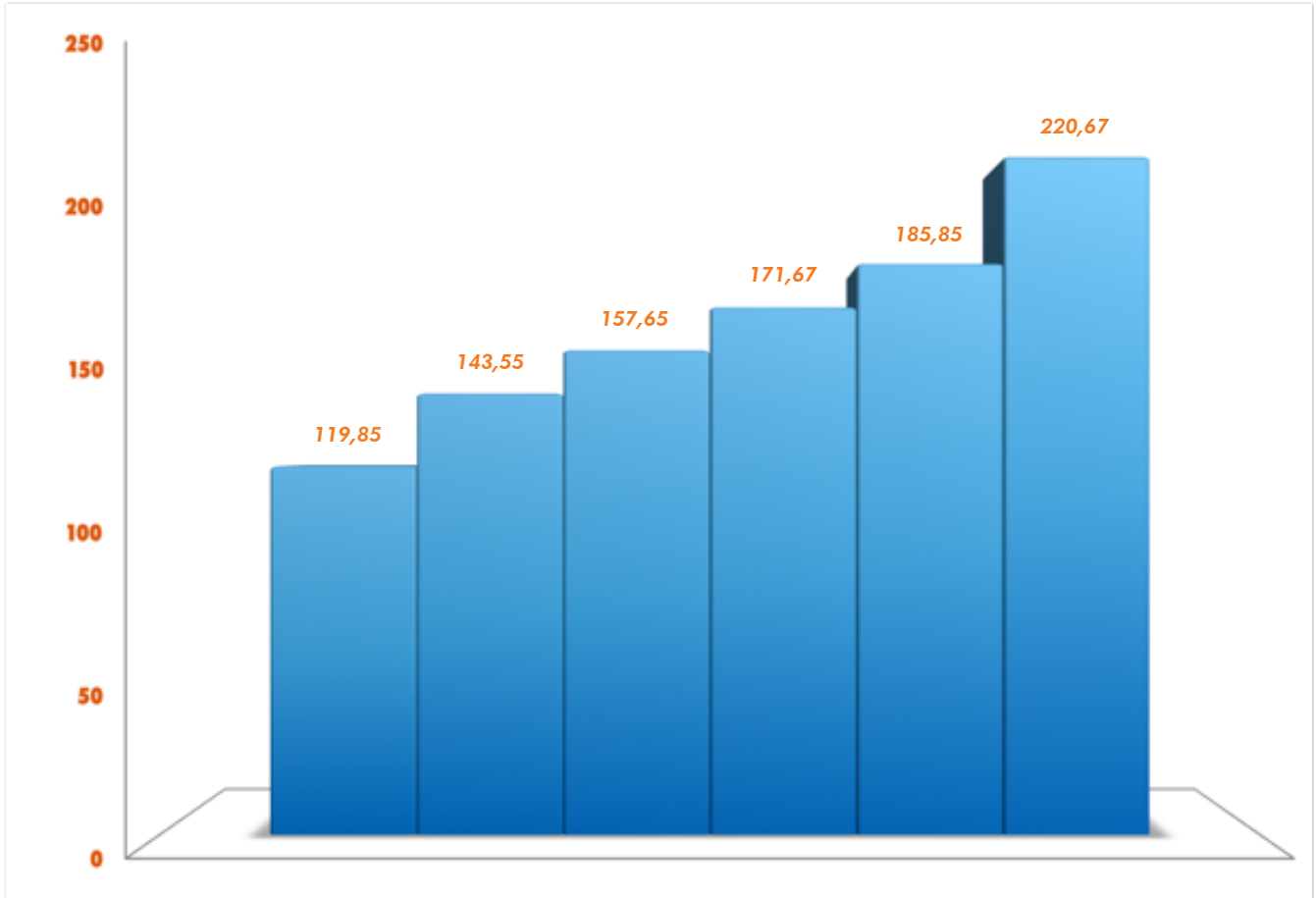
	2009	2010	2011	2012	2013	2014
Repasso	307,28	369,13	410,34	438,57	445,09	508,99

CLUBES DE FUTEBOL - R\$ MILHÕES



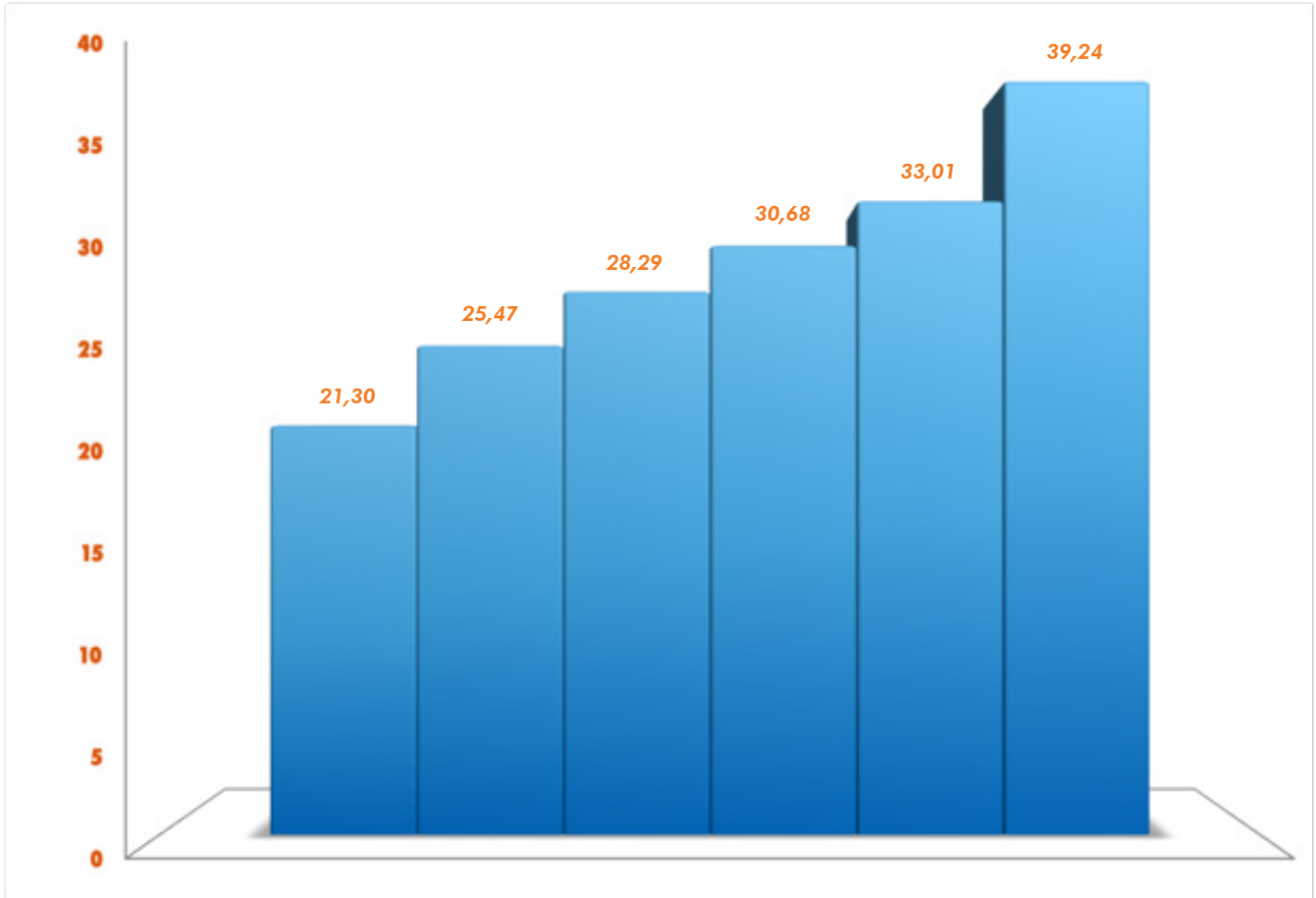
	2009	2010	2011	2012	2013	2014
Repasse	31,71	34,13	43,98	66,18	65,12	102,90

COMITÊ OLÍMPICO BRASILEIRO - R\$ MILHÕES



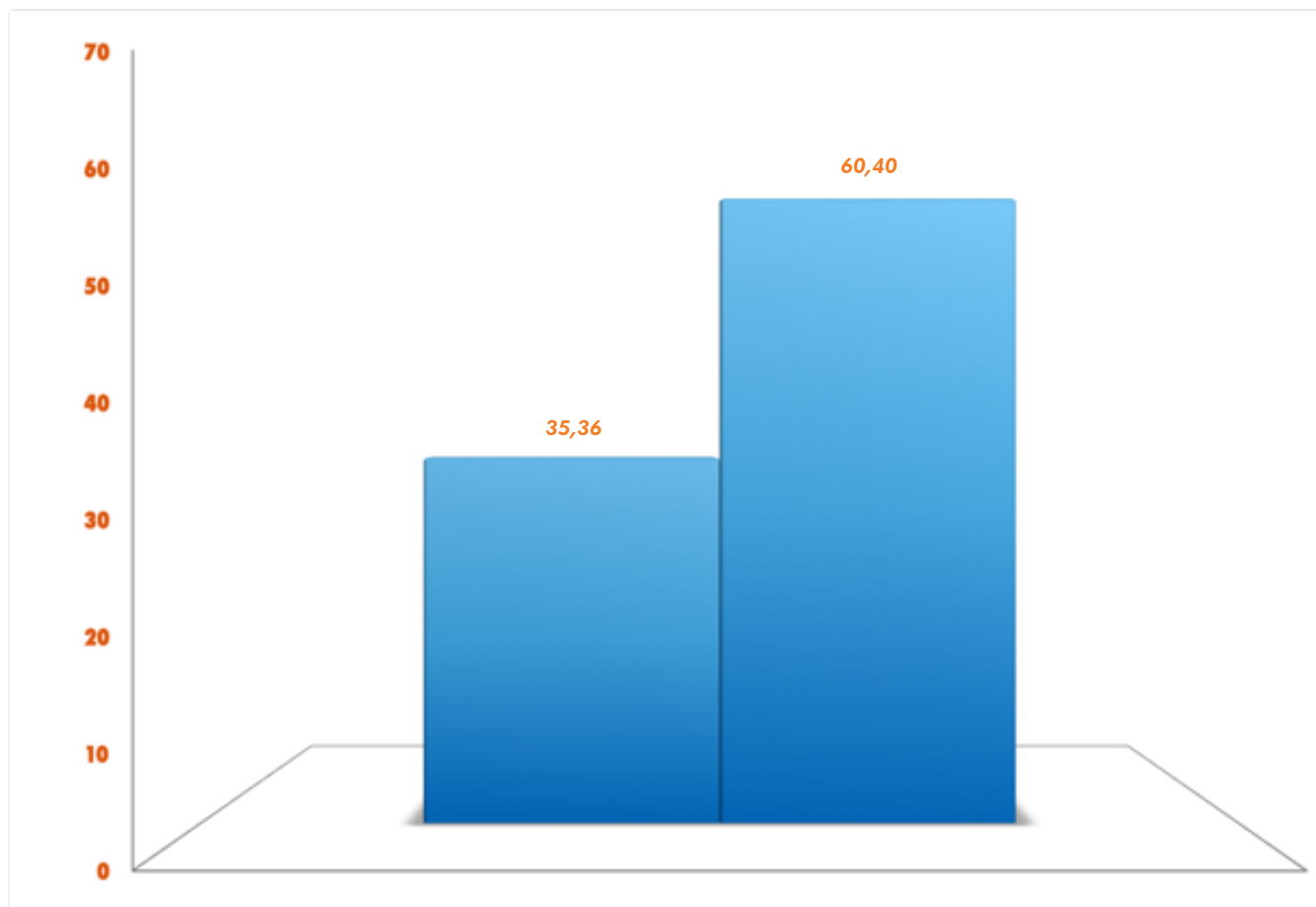
	2009	2010	2011	2012	2013	2014
Repasso	119,85	143,55	157,65	171,67	185,85	220,67

COMITÊ PARALÍMPICO BRASILEIRO - R\$ MILHÕES



	2009	2010	2011	2012	2013	2014
Repasso	21,30	25,47	28,29	30,68	33,01	39,24

CONFEDERAÇÃO BRASILEIRA DE CLUBES - R\$ MILHÕES



	2013	2014
Repasse	35,36	60,40